

History Subject Road Map



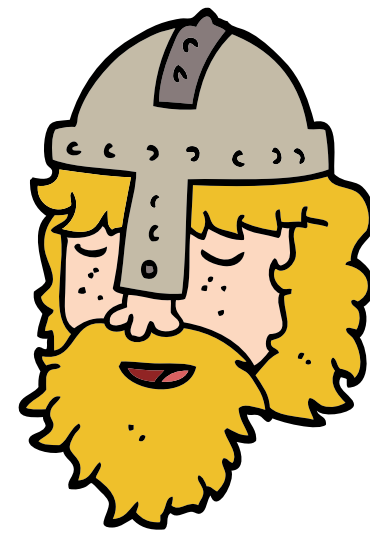
PARK LANE
PRIMARY SCHOOL

Continuing
into
Secondary
School

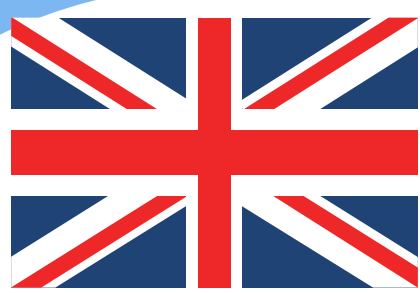
Children will explore
how the Roman
invasion changed
Britain.



Children will look into
what extent medieval
Britain leapt forward
after the Dark Ages.

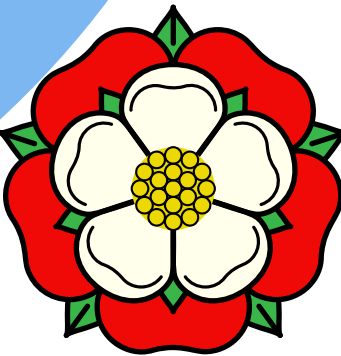


**Britain
before 1066**



1066-1509

1509-1745



The children will focus on what it was like
to be a Tudor monarch and also explore
democracy within the 17th century.

Year 7

Children will focus on local history
across Nuneaton. They will explore
the site of Stockingford Colliery
which was used during the Imperial
period for mining coal.

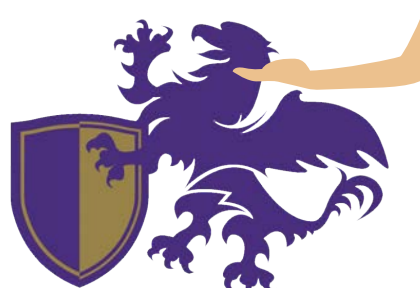


**Local History -
Mining**



Egyptians

We will develop children's knowledge
of ancient Egypt. We'll also teach
children about life on the Nile, the
great pyramids and the powerful rule
of the ancient pharaohs.



GRIFFIN
SCHOOLS
TRUST





The children will learn about the Black Death (also known as the Pestilence, the Great Mortality or the Plague) and how this became such a fatal pandemic. They will make comparisons with History within their living memory such as Covid19.



World War 1

Black Death and the Dark Ages - 1300's

Year 5/6
Cycle 2

Children will learn about the causes of war and significant events that happen within it.



Mayans

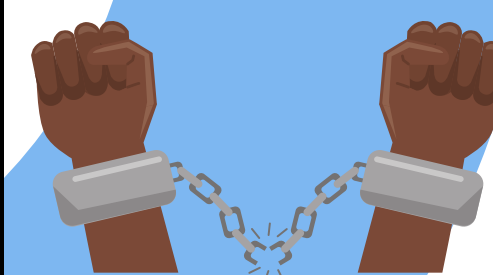
Children will learn about the Victorian era and the Industrial Revolution. They will look at how Queen Victoria led the expansion of the British Empire.



The Victorians

Children study non-European history through the Mayan society and identify contrasts to British History.

Children will learn about Africa past and present and the development of the slave trade. It also explores Britain's role in the transatlantic slave trade, the causes and consequences of the European colonisation of Africa and the worldwide communities that make up the African diaspora.



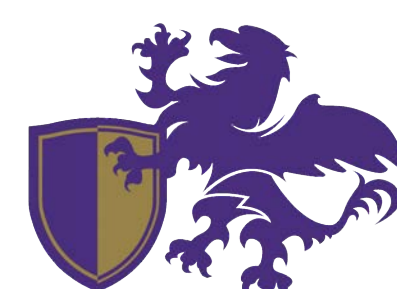
World War 2

Benin/ Ancient African Civilisations

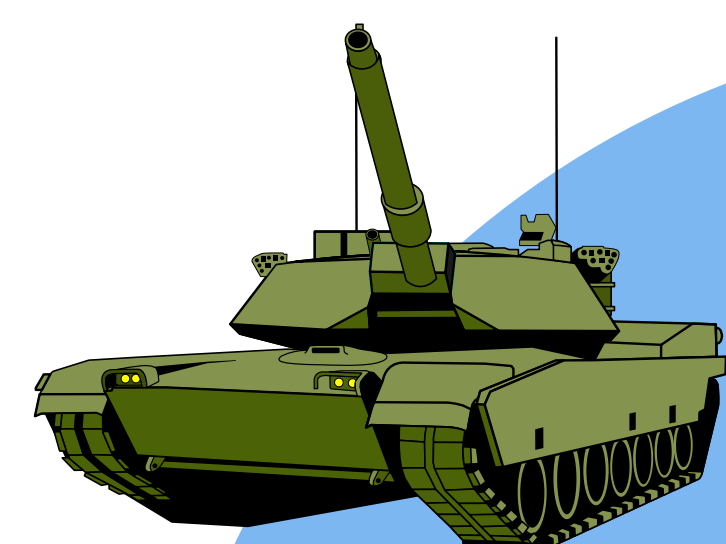


Year 5/6
Cycle 1

Children will learn about WW2 including key historical figures and events such as the Blitz, the evacuees and how they have shaped the world we live in.



GRIFFIN
SCHOOLS
TRUST





Children will learn about the Vikings and when they invaded Britain. They will also explore some Anglo Saxon Kings and what happened during Britain under their reign.

1066

Children will learn about the significant events that led to the Battle of Hastings.

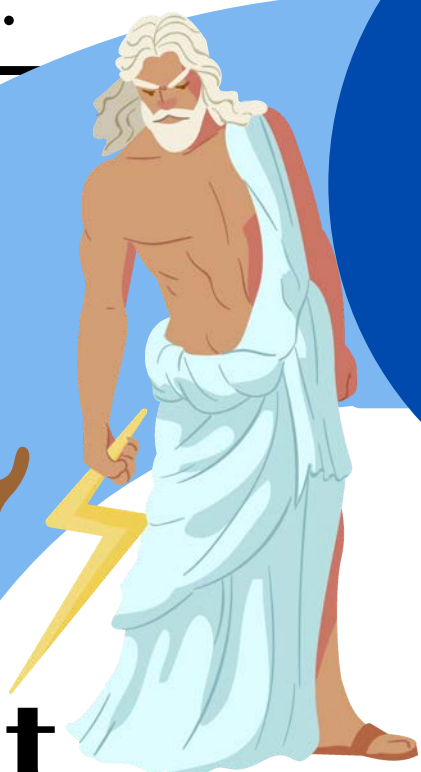
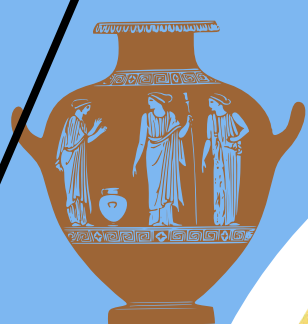
Anglo Saxons and Vikings



Children will study the Roman impact on Britain, learning about the key figures of time, how they lived, and how we still see their impact today through their legacies.

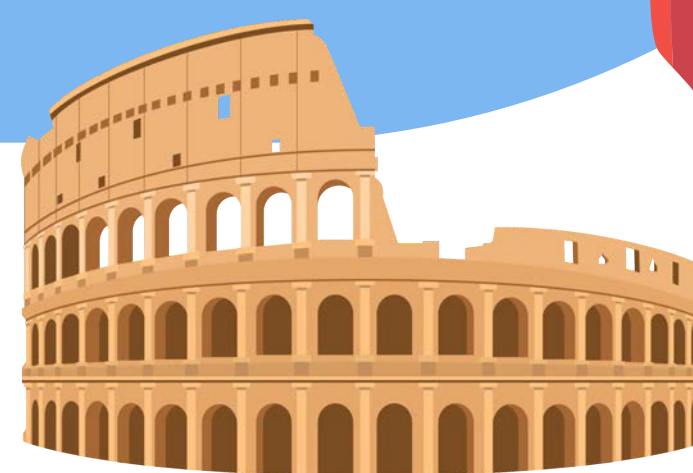
Children will explore Ancient Greece including Gods and Mortals.

Ancient Greece



Year 4

Romans



Children compare Stone Age to life now. They find out about homes, sources of food and transport and materials. Children will draw upon contradictory sources to understand history.

A study of Pompeii

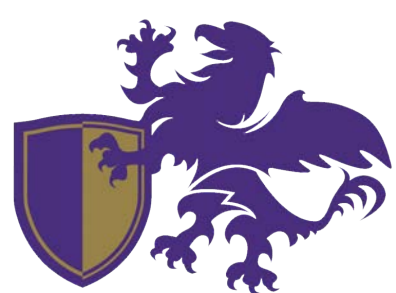
Children will learn about the extreme volcano eruption that devastated the city of Pompeii causing it to be frozen in time



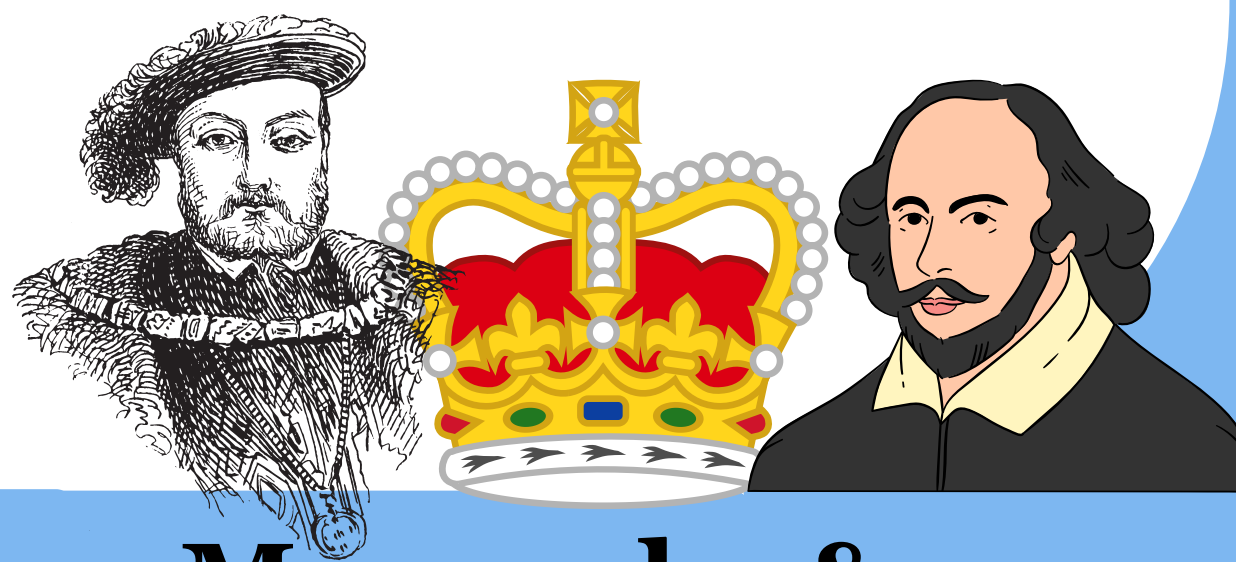
Stone Age



Year 3



GRIFFIN
SCHOOLS
TRUST



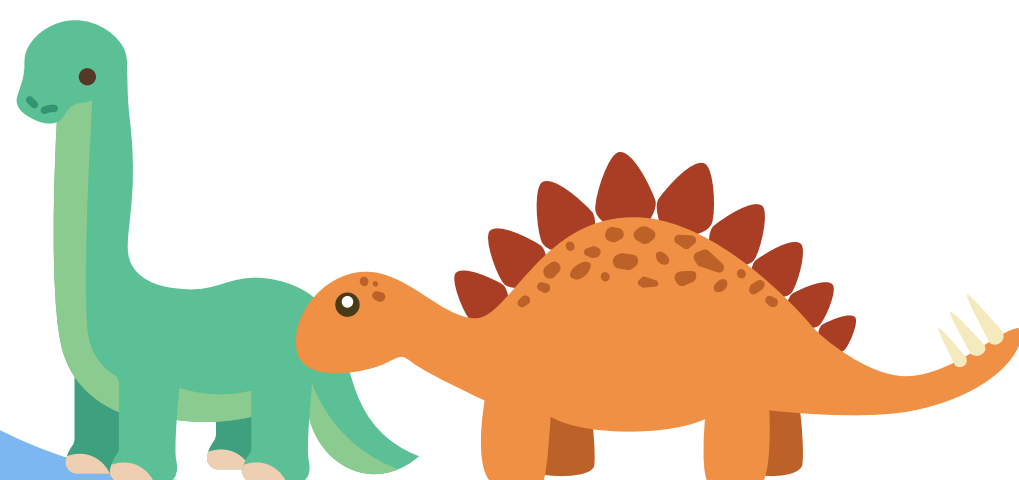
Events beyond living memory

Monarchs & significant individuals

Year 2

The children look at the Great Fire of London as a significant event.

Children study the lives of living and past monarchs as well as significant people who have contributed to national achievements.



Dinosaur Planet

Within living memory



Children will learn that dinosaurs were once living by exploring historical evidence.

The children look at memories within their own lifetime and recall things from the past.

Year 1



Understanding the world

**Early
Years**

The children will begin to make sense of their own life-story and family history. They will comment on images of familiar situations in the past. They will also begin to compare and contrast characters from stories, including figures from the past.