

# Geography

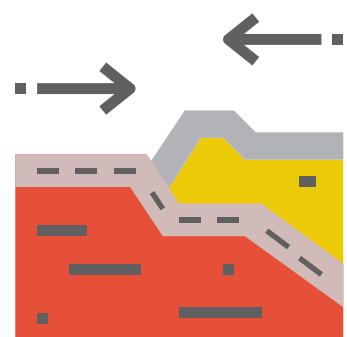
## Subject Road Map



PARK LANE  
PRIMARY SCHOOL

Continuing  
into  
Secondary  
School

Place  
Knowledge



Physical geography: geolical timescales and plate tectonics, rocks, weathering and soils, weather and climate including the change from Ice age to present day, and glaciation, hydrology and coasts.



Deepen understanding of world's countries with a focus on Africa, Russia, Asia (including China and India) and the Middle East identifying countries and major cities

Use Geographical Information System (GIS) to view, analyse and interpret places and data.

Interpret OS Maps using grid reference and scale, topographical and other thematic mapping.

Human and  
Physical Geography

Locational  
Knowledge

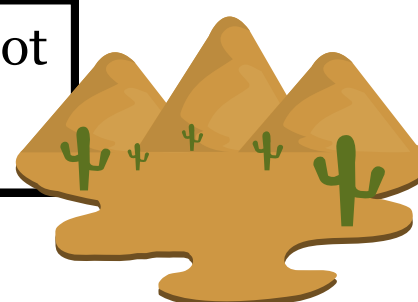
Geographical  
Skills and  
Fieldwork

Comparing a region within Africa to a region within Asia. .

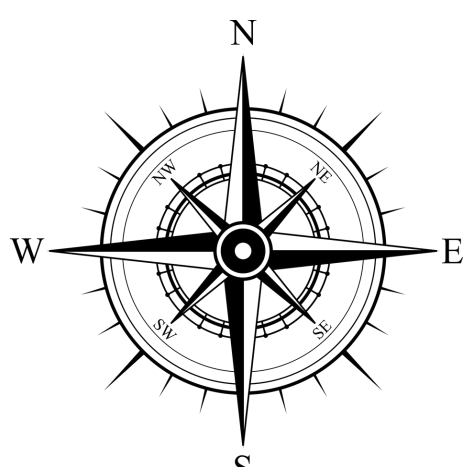


Human Geography: population and urbanisation, international development, economic activities in the primary, secondary, tertiary and quaternary sectors.

Polar and hot deserts



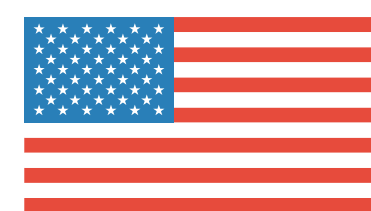
Year 7



8 points of a compass, four and six-grid references

Locate the world's countries and major cities focusing on Europe and North and South America .

Compare a region in the UK to a region in an EU country and a region in North or South America.



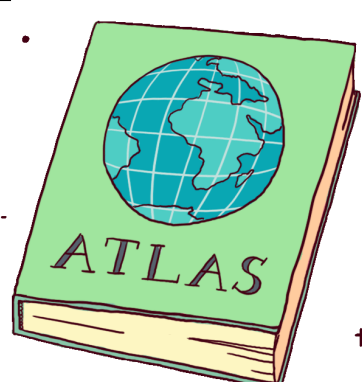
Place  
Knowledge

Geographical  
Skills and  
Fieldwork

Locational  
Knowledge

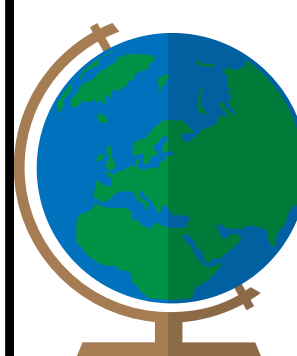
Human and Physical  
Geography

Year 6

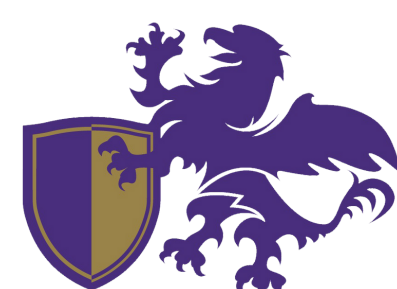


Use maps, atlases, globes and digital mapping to locate countries and describe features.

Latitude and longitude, equator, northern and Southern Hemisphere, the tropics of cancer and Capricorn, arctic and antarctic circle, prime/ greenwich meridian and time zones..



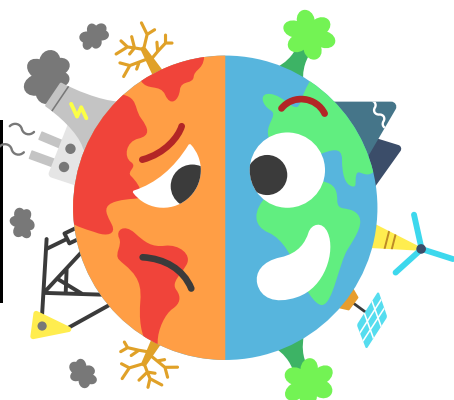
Describe and understand key aspects of human and physical geography .



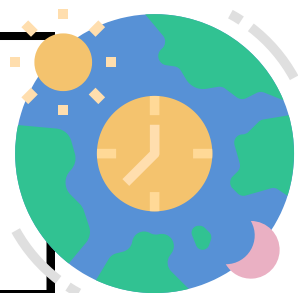
GRIFFIN  
SCHOOLS  
TRUST

## Place Knowledge

How humans affect the environment



Prime/ Greenwich Meridian and time zones



Capital cities of British Isles and UK

## Human and Physical Geography

## Locational Knowledge

Compare the UK to a North American country



Physical features of coasts and explore erosion and deposition

Climate zones and weather patterns



Seas around UK

# Year 5

Comparing Britain and Italy



OS map symbols: telephone box, post office, school, church

Study of the local area

Settlements

## Skills and Fieldwork

## Human and Physical Geography

## Locational Knowledge



EUROPE

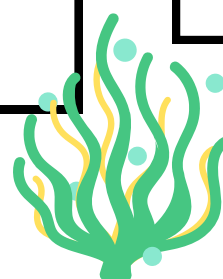
European countries

## Place Knowledge

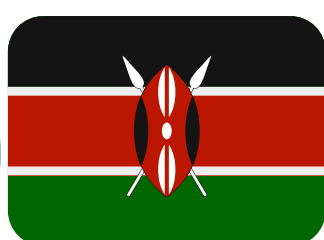
Six-figure grid references

Seas and oceans of the world including the Great Barrier Reef

Investigating environmental concerns



# Year 4



A study on Kenya

OS map symbols: footpath, rail, house, place of worship etc

Physical features including rivers



Origins of food across the world

## Place Knowledge

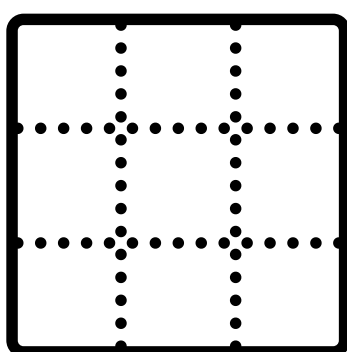
## Skills and Fieldwork

## Human and Physical Geography

## Locational Knowledge

Recognise similarities and differences between places

Four-figure grid references and 8 compass points



Volcanoes, earthquake, tectonic plates and earth layers



UK cities and counties

# Year 3



GRIFFIN  
SCHOOLS  
TRUST



